

Topic Day 4 – 08.01.21

Wednesday, January 06, 2021 1:08 PM

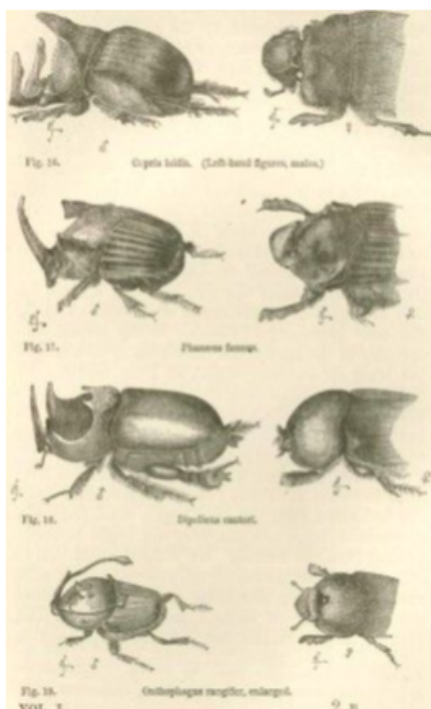
Art - How did Darwin document his discoveries?

Skill – Sketching

Whilst on his voyage Darwin documented his findings with detailed drawings about the new species that he found. These helped him develop his theory of evolution.

Here are some examples:

What do you notice about them?





Introduct...

to

Now have a look at the PowerPoint to see how to do your own scientific sketch using your sample from yesterday.

Using the samples from yesterday, work in coloured pencil and examine very fine details. Look carefully to accurately capture the shape, form, pattern and colour.

Draw the main sample but also focus on specific parts and draw them larger including as much accurate detail as possible.

Finally, add 3-5 research questions around your drawing that will help you find out more about each specimen.