

# 2020 KS2 School Dashboard

for governors & school leaders

Produce custom dashboards at [fftaspire.org](https://fftaspire.org)

## Wilnecote Junior Academy

LA Staffordshire DFE 8602334 Produced August 2020 Version 1

### What it is

Seven easy-to-use reports that help governors and school leaders to evaluate school performance using the latest 2019 DFE school performance indicators.

### What it tells you

- What are the strengths, areas for improvement and under-performing groups of pupils
- How does attainment and pupil progress compare to the national average over the last three years?
- How are you performing in different subjects?

### Important for 2020

2020 data has been calculated using the teacher assessment data uploaded by schools who participated in the 2020 FFT Results Service. **The data is for internal use only and is NOT intended to be used for external accountability.**

With no test data available, this year's TA analysis should also be treated with additional care, especially when comparing to data from previous years. The 'national' comparator has been generated using the data supplied by participating schools. Please take this into account when analysing your school's data.

### About the data shown

#### Actual results

Actual results for your school, using a range of measures such as averages and thresholds.



#### Gauges

These display headline indicators and whether actual results and pupils' progress are in line with, or significantly above or below, the national average.



#### Pupil progress

The value added progress that your pupils have made from one key stage to the next. FFT compares your actual results to the estimated results based on the progress of similar pupils nationally.



#### Statistical significance

Green plus signs and red minus signs highlight where either actual results or pupils' progress is significantly above or below the national average.



#### Trends

The dashboard analyses school performance over 3-5 years. Any significant year-on-year improvement is highlighted using an up arrow. Significant declines in performance are highlighted with a down arrow.



#### Strengths & weaknesses

These highlight key pupil groups and subjects where progress is above or below the national average.

### Working in partnership with



### Data sources

2020 data has been calculated using the teacher assessment data uploaded by schools who participated in the 2020 FFT Results Service.

2020 self-evaluation reports have been calculated using the teacher assessments provided by schools as part of the FFT Results Service. ?

Wilnecote Junior Academy

2020 KS2

# Overview

## KS2 Attainment 2020 - Actual results

84 pupils

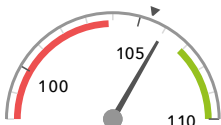
Average Scaled Score (Re, Ma)

% Expected standard+ (Re, Wr, Ma)

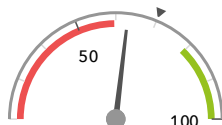
DFE

106.0 ↑

63%



In line with the national average (105.4) ◀



In line with the national average (70%) ◀

## KS2 Progress 2020 - Value Added

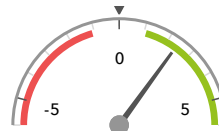
83 matched pupils

Average Scaled Score (Re, Ma)

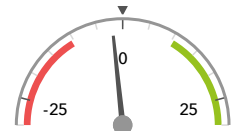
% Expected standard+ (Re, Wr, Ma)

+2.4 + ↑

-2%



Significantly above the national average (0) ◀



In line with the national average (0%) ◀

## KS2 higher and lower performing pupil groups 2020

Minimum group size: 5

	Higher performing	Lower performing
<b>Overall achievement</b> pupil progress	No SEN (64) + ↑ Middle attainers (63) + ↑ Summer Term (31) + ↑	SEN Support (19) Lower attainers (19) ↑ Joined in Y5 or Y6 (7)
<b>KS2 reading achievement</b> pupil progress	No SEN (64) + ↑ Spring Term (30) + ↑ FSM (in last 6 years) (34) + ↑	SEN Support (19)
<b>KS2 writing achievement</b> pupil progress	No SEN (64) + ↑ Summer Term (31) ↑ Middle attainers (63) ↑	SEN Support (19) - Lower attainers (19) Joined in Y5 or Y6 (7)
<b>KS2 mathematics achievement</b> pupil progress	Male (41) + ↑ No SEN (64) + ↑ Not FSM (in last 6 years) (49) + ↑	SEN Support (19) Joined in Y5 or Y6 (7)

2020 self-evaluation reports have been calculated using the teacher assessments provided by schools as part of the FFT Results Service. ?

Wilnecote Junior Academy

2020 KS2

# Attainment & progress

## KS2 Attainment 2020

84 pupils

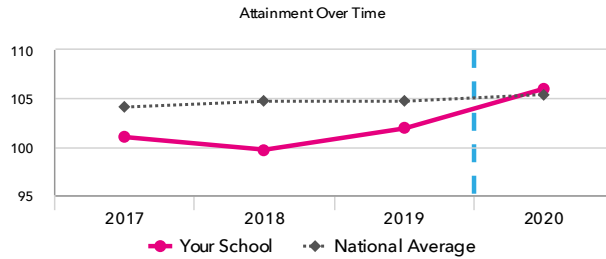
Average Scaled Score (Re, Ma)

106.0 ↑

FFT Rank



In line with the national average (105.4)



## KS2 Progress 2020

83 matched pupils

Average Scaled Score (Re, Ma)

+2.4 + ↑

FFT Rank



Significantly above the national average (0)

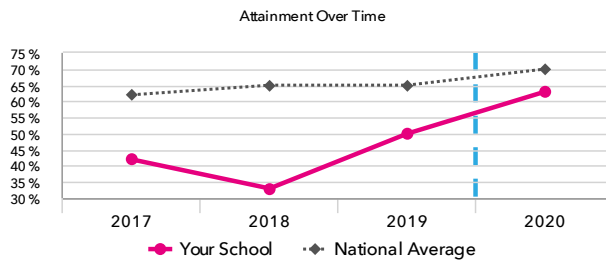
% Expected standard+ (Re, Wr, Ma)

-2%

FFT Rank



In line with the national average (0%)



% Expected standard+ (Re, Wr, Ma) DFE

63%

FFT Rank



In line with the national average (70%)

## KS2 performance summary

	Actual results			Pupil progress		
	2018	2019	2020	2018	2019	2020
Number of Pupils / % Matched	69	80	84	99%	96%	99%
% Expected standard+ (Re, Wr, Ma)	33% ↓	50% ↑	63%	-23% ↓	-14% ↓	-2%
% Higher standard (Re, Wr, Ma)	3%	1% ↓	13%	-1%	-6%	+6% ↑
Average Scaled Score (Re, GPS, Ma)	99.8 ↓	102.2 ↑	105.7 ↑	-3.3 ↓	-2.9 ↓	+1.6 ↑
Average Scaled Score (Re, Ma)	99.7 ↓	101.9 ↓	106.0 ↑	-3.2 ↓	-2.8 ↓	+2.4 ↑
% Expected standard+ Reading	54% ↓	65%	85% ↑	-17% ↓	-9%	+9% ↑
% Higher standard Reading	14% ↓	15% ↓	40% ↑	-4%	-7%	+19% ↑
Scaled Score Reading	101.3 ↓	101.7 ↓	106.5 ↑	-2.3 ↓	-2.6 ↓	+3.0 ↑
% Expected standard+ Writing	51% ↓	65% ↓	67%	-23% ↓	-15% ↓	-6%
% Higher standard Writing	12%	11% ↓	17%	+1%	-3%	+5%
Scaled Score Writing	97.5 ↓	99.5 ↓	103.7 ↑	-3.0 ↓	-2.3 ↓	-0.2 ↑
% Expected standard+ Maths	41% ↓	75% ↑	79%	-31% ↓	-3% ↑	+3%
% Higher standard Maths	4% ↓	9% ↓	32% ↑	-10% ↓	-15% ↓	+15% ↑
Scaled Score Maths	98.4 ↓	102.0 ↑	105.6 ↑	-4.2 ↓	-2.7 ↓	+1.7 ↑
% Expected standard+ Grammar, Punctuation & Spelling	52% ↓	73% ↑	74%	-21% ↓	-7%	-2%
% Higher standard Grammar, Punctuation & Spelling	20% ↓	14% ↓	30% ↑	-2%	-17% ↓	+8% ↑
Scaled Score Grammar, Punctuation & Spelling	101.6 ↓	102.9 ↓	105.2 ↑	-2.6 ↓	-3.4 ↓	+0.1 ↑
% Expected standard+ Science	48% ↓	74% ↑	-	-	-	-

2020 self-evaluation reports have been calculated using the teacher assessments provided by schools as part of the FFT Results Service. ?

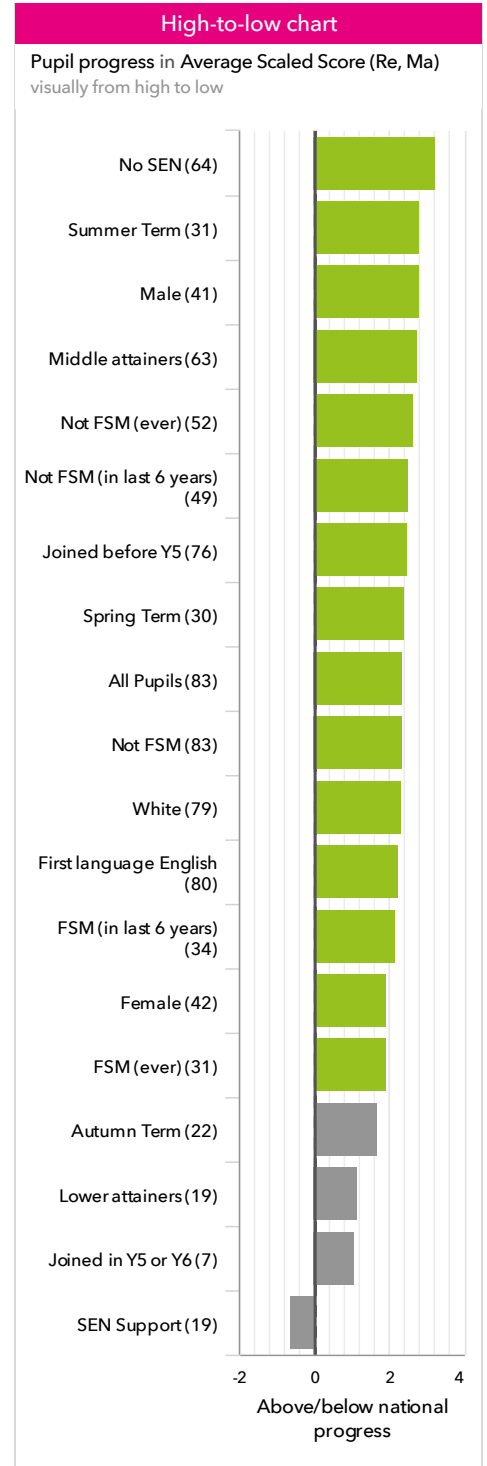
Wilnecote Junior Academy

2020 KS2

# Pupil groups

## KS2 Pupil groups performance 2020

	Pupils	Actual results			Pupil progress			
		Average Scaled Score (Re, Ma)	% Expected standard+ (Re, Wr, Ma) <small>DFE</small>	% Higher standard (Re, Wr, Ma) <small>DFE</small>	Average Scaled Score (Re, Ma)	% Expected standard+ (Re, Wr, Ma)	% Higher standard (Re, Wr, Ma)	
<b>Summary</b>	All Pupils	84	106.0 ↑	63%	13%	+2.4 ↑	-2%	+6% ↑
<b>Gender</b>	Male	42	105.0 ↑	55%	14%	+2.8 ↑	-2%	+10% ↑
	Female	42	107.0 ↑	71%	12%	+1.9 ↑	-3%	+3%
<b>FFT Prior Attainment</b>	Higher attainers	1	113.5	100%	100%	+0.3	+1%	+37%
	Middle attainers	63	108.8 ↑	79% ↑	16%	+2.8 ↑	+0% ↑	+8% ↑
	Lower attainers	19	96.3	5%	0%	+1.2 ↑	-12%	-0%
<b>Pupil Premium</b>	FSM (in last 6 years)	35	104.2	49%	9%	+2.1 ↑	-9%	+4%
	Not FSM (in last 6 years)	49	107.3 ↑	73% ↑	16%	+2.5 ↑	+2%	+8%
<b>FSM</b>	Not FSM	84	106.0 ↑	63% ↓	13%	+2.4 ↑	-2%	+6% ↑
<b>FSM Ever</b>	FSM (ever)	31	104.2	45%	6%	+1.9 ↑	-12%	+2%
	Not FSM (ever)	53	107.1 ↑	74% ↑	17%	+2.6 ↑	+3%	+9% ↑
<b>Term of Birth</b>	Autumn Term	22	105.8	59%	18%	+1.7 ↑	-9%	+9%
	Spring Term	31	105.4	58%	16%	+2.4 ↑	-3%	+11% ↑
	Summer Term	31	106.8 ↑	71% ↑	6%	+2.8 ↑	+3%	+0%
<b>SEN Group</b>	SEN Support	19	98.3	16%	5%	-0.6	-22%	+2%
	No SEN	65	108.3 ↑	77% ↑	15%	+3.3 ↑	+3% ↑	+8% ↑
<b>EAL</b>	First language not English	4	107.5	75%	0%	+5.3	+2%	-8%
	First language English	80	106.0 ↑	63%	14%	+2.3 ↑	-3%	+7% ↑
<b>Mobility</b>	Joined in Y5 or Y6	8	104.9	63%	13%	+1.1	-3%	+7%
	Joined before Y5	76	106.1 ↑	63%	13%	+2.5 ↑	-2%	+6% ↑
<b>Ethnicity</b>	White	80	106.0 ↑	64%	14%	+2.3 ↑	-2%	+7% ↑
	Black Caribbean	3	109.7	67%	0%	+3.6	-15%	-7%
	Black African	1	95.0	0%	0%	+0.2	-9%	-0%



2020 self-evaluation reports have been calculated using the teacher assessments provided by schools as part of the FFT Results Service. ?

Wilnecote Junior Academy

2020 KS2

# Subjects

## KS2 subject performance 2020

	Actual results			Pupil progress			Actual results over time		
	2018	2019	2020	2018	2019	2020			
Number of Pupils / % Matched	69	80	84	99%	96%	99%			
<b>Reading</b>									
% Expected standard+	54% <span>⬇️</span>	65%	85% <span>⬆️</span>	-17% <span>⬇️</span>	-9%	+9% <span>⬆️</span>	% Expected standard+ Reading 		
% Higher standard	14% <span>⬇️</span>	15% <span>⬇️</span>	40% <span>⬆️</span>	-4%	-7%	+19% <span>⬆️</span>			
Scaled Score	101 <span>⬇️</span>	102 <span>⬇️</span>	106 <span>⬆️</span>	-2.3 <span>⬇️</span>	-2.6 <span>⬇️</span>	+3.0 <span>⬆️</span>			
<b>Writing</b>									
% Expected standard+	51% <span>⬇️</span>	65% <span>⬇️</span>	67%	-23% <span>⬇️</span>	-15% <span>⬇️</span>	-6%	% Expected standard+ Writing 		
% Higher standard	12%	11% <span>⬇️</span>	17%	+1%	-3%	+5%			
Scaled Score	97 <span>⬇️</span>	99 <span>⬇️</span>	104 <span>⬆️</span>	-3.0 <span>⬇️</span>	-2.3 <span>⬇️</span>	-0.2 <span>⬆️</span>			
<b>Maths</b>									
% Expected standard+	41% <span>⬇️</span>	75% <span>⬆️</span>	79%	-31% <span>⬇️</span>	-3% <span>⬆️</span>	+3%	% Expected standard+ Maths 		
% Higher standard	4% <span>⬇️</span>	9% <span>⬇️</span>	32% <span>⬆️</span>	-10% <span>⬇️</span>	-15% <span>⬇️</span>	+15% <span>⬆️</span>			
Scaled Score	98 <span>⬇️</span>	102 <span>⬆️</span>	106 <span>⬆️</span>	-4.2 <span>⬇️</span>	-2.7 <span>⬇️</span>	+1.7 <span>⬆️</span>			
<b>Grammar, Punctuation &amp; Spelling</b>									
% Expected standard+	52% <span>⬇️</span>	73% <span>⬆️</span>	74%	-21% <span>⬇️</span>	-7%	-2%	% Expected standard+ Grammar, Punctuation & Spelling 		
% Higher standard	20% <span>⬇️</span>	14% <span>⬇️</span>	30% <span>⬆️</span>	-2%	-17% <span>⬇️</span>	+8% <span>⬆️</span>			
Scaled Score	102 <span>⬇️</span>	103 <span>⬇️</span>	105	-2.6 <span>⬇️</span>	-3.4 <span>⬇️</span>	+0.1 <span>⬆️</span>			
<b>Science</b>									
% Expected standard+	48% <span>⬇️</span>	74% <span>⬆️</span>	-	-	-	-	% Expected standard+ Science 		

2020 self-evaluation reports have been calculated using the teacher assessments provided by schools as part of the FFT Results Service. ?

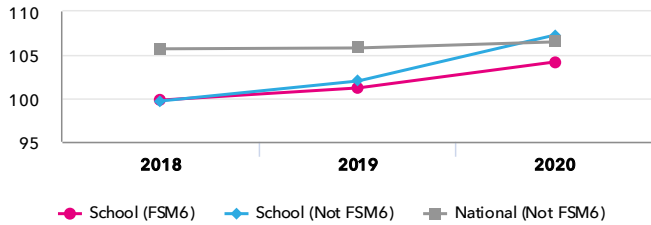
Wilnecote Junior Academy

2020 KS2

# Disadvantaged pupils

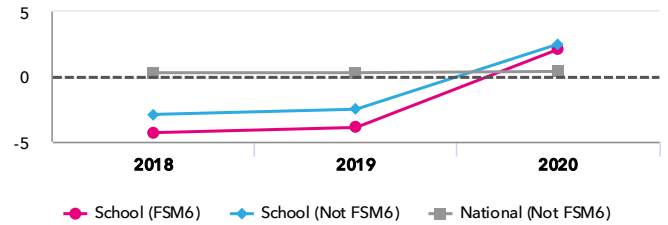
## KS2 attainment for disadvantaged pupils 2020

Average Scaled Score (Re, Ma)

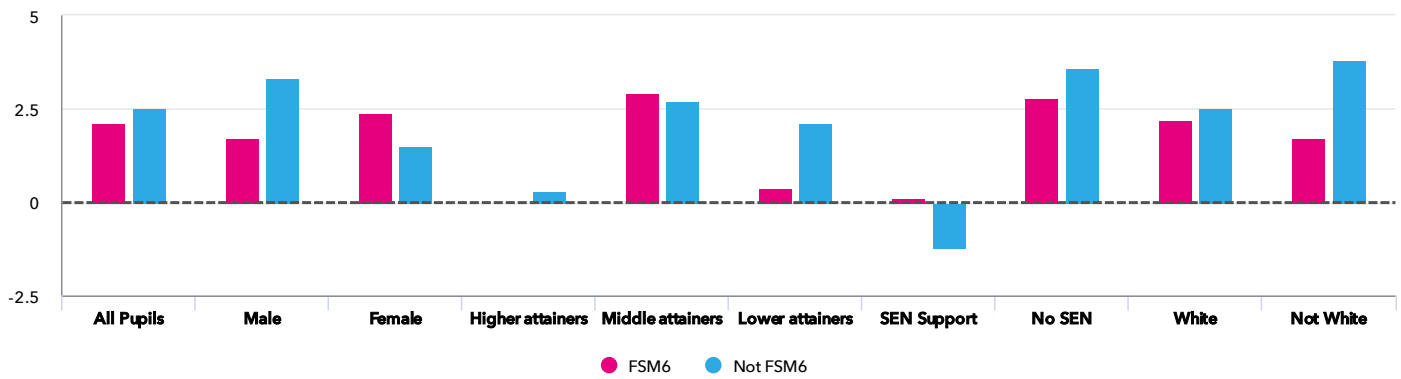


## KS2 progress for disadvantaged pupils 2020

Average Scaled Score (Re, Ma)



## Progress gap Average Scaled Score (Re, Ma)



## Attainment & progress

Pupils	Attainment			Progress					
	Average Scaled Score (Re, Ma)			Average Scaled Score (Re, Ma)					
	FSM6	Not FSM6	Gap	FSM6	Not FSM6	Gap			
<b>Summary</b>	All Pupils	35	49	104.2	107.3	↑ -3.1	2.1	2.5	↑ -0.4
<b>Gender</b>	Male	14	28	101.2	106.9	-5.7	1.7	3.3	-1.6
	Female	21	21	106.2	107.8	-1.6	2.4	1.5	0.9
<b>FFT Prior Attainment</b>	Higher attainers	-	1	-	113.5	-	-	0.3	-
	Middle attainers	24	39	108.1	109.2	-1.1	2.9	2.7	0.2
	Lower attainers	10	9	94.5	98.4	-3.9	0.4	2.1	-1.7
<b>SEN Group</b>	SEN Support	8	11	95.4	100.3	-4.9	0.1	-1.2	1.3
	No SEN	27	38	106.8	109.3	-2.5	2.8	3.6	-0.8
<b>Ethnic Group</b>	White	33	47	104.3	107.2	-2.9	2.2	2.5	-0.3
	Not White	2	2	102.5	109.5	-7	1.7	3.8	-2.1

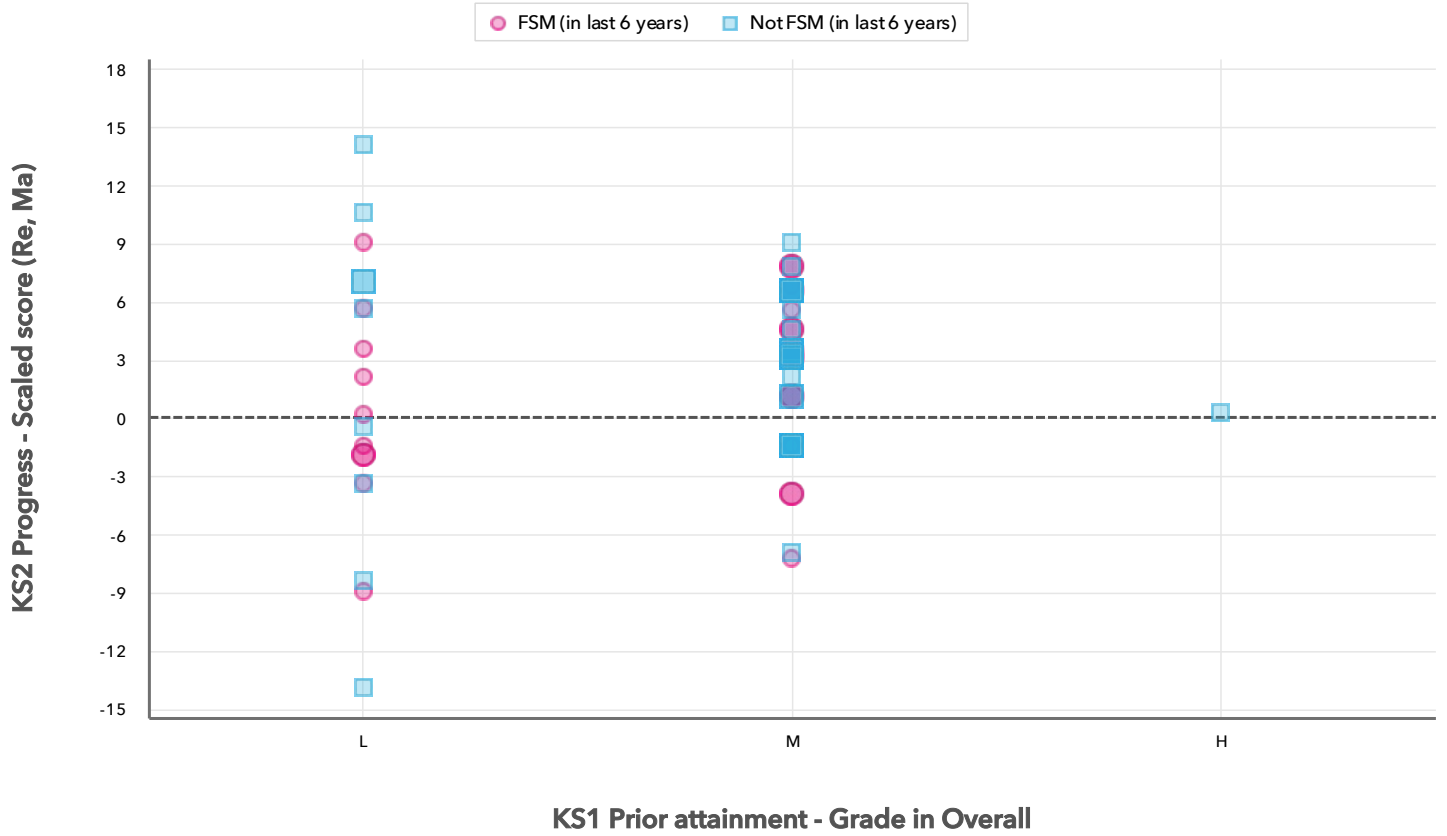
2020 self-evaluation reports have been calculated using the teacher assessments provided by schools as part of the FFT Results Service. ?

Wilnecote Junior Academy

2020 KS2

# Scatterplot

KS2 Pupil scatterplot 2020 84 pupils highlighted by Pupil Premium



Context data has been produced using either the data supplied by schools as part of the FFT 2020 Results Service or from the latest census data provided by the DfE. [?](#)

Wilnecote Junior Academy

2020

KS2

## Context

### Context · Year 6

		Pupils		Comparative profile 2019 / 2020		Absence during Key Stage 2		Persistent absence during Key Stage 2	
		School	School	National	School	National	School	National	
<b>Summary</b>	All Pupils	84	100%	100%	-	-	-	-	
<b>Gender</b>	Male	42	50%	51%	-	-	-	-	
	Female	42	50%	49%	-	-	-	-	
<b>FFT Prior Attainment</b>	Higher attainers	1	1%	15%	-	-	-	-	
	Middle attainers	63	75%	61%	-	-	-	-	
	Lower attainers	19	23%	19%	-	-	-	-	
<b>Pupil Premium</b>	FSM (in last 6 years)	35	42%	30%	-	-	-	-	
	Not FSM (in last 6 years)	49	58%	70%	-	-	-	-	
<b>FSM</b>	Not FSM	84	100%	78%	-	-	-	-	
<b>FSM Ever</b>	FSM (ever)	31	37%	30%	-	-	-	-	
	Not FSM (ever)	53	63%	69%	-	-	-	-	
<b>Term of Birth</b>	Autumn Term	22	26%	34%	-	-	-	-	
	Spring Term	31	37%	32%	-	-	-	-	
	Summer Term	31	37%	34%	-	-	-	-	
<b>SEN Group</b>	SEN Support	19	23%	15%	-	-	-	-	
	No SEN	65	77%	82%	-	-	-	-	
<b>EAL</b>	First language not English	4	5%	25%	-	-	-	-	
	First language English	80	95%	74%	-	-	-	-	
<b>Mobility</b>	Joined in Y5 or Y6	8	10%	7%	-	-	-	-	
	Joined before Y5	76	90%	93%	-	-	-	-	
<b>Ethnicity</b>	White	80	95%	69%	-	-	-	-	
	Black Caribbean	3	4%	3%	-	-	-	-	
	Black African	1	1%	6%	-	-	-	-	